

Upcoming Events

## Charlie Kaplan's "Sculpture, Pleasing Curves" at PYO Gallery LA

DECEMBER 20, 2012 by MEGAN KOESTER in UPCOMING EVENTS with 0 COMMENTS

Tweet [Pin It](#) [Star](#)

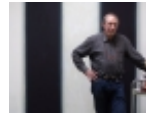
PYO Gallery LA is pleased to present *Sculpture, Pleasing Curves*, a solo exhibition of works by noted Californian sculptor [Charlie Kaplan](#). An opening reception for the exhibit, which runs **January 19th through March 9th**, will take place **Saturday, January 19th from 6PM to 8PM**.



BLACK SLICE, BELGIAN BLACK MARBLE, 2005  
PHOTO CREDIT: D. A. BROWN PHOTOGRAPHY

*Sculpture, Pleasing Curves* is the first complete exhibit of Kaplan's sculpture, and will feature works dating from 1989 to present day. In keeping with Kaplan's connection to and love of highly polished marble, the majority of sculptures in the exhibit are constructed from Carrara marble; a handful of additional works run the gamut from alabaster to bronze and stainless steel.

Currently Showing in Los Angeles



Peter Lodato: Spanish Black at William Turner Gallery



Mario Ybarra Jr.'s "Double Feature" at Honor Fraser



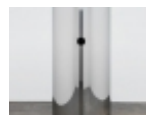
Photographs by Dylan Vitone and Richard Gilles at dnj Gallery



Charlie Kaplan's "Sculpture, Pleasing Curves" at PYO Gallery LA



Cathy Daley: New Work at Edward Cella Art + Architecture

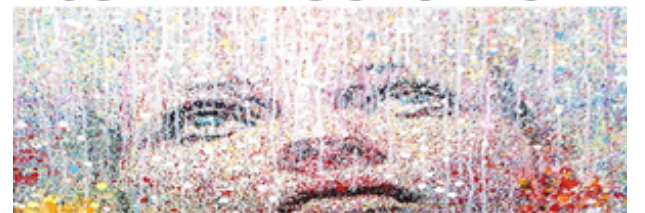


Kathryn Andrews: D.O.A. | D.O.B. at David Kordansky Gallery



L.A. Louver Presents Enrique Martínez Celaya: The Hunt's Will

## JOHN WAGUESPACK



NEW PAINTINGS  
NOVEMBER 16, 2012 - JANUARY 26, 2013  
111 Minna Gallery | San Francisco

Featured Artists





SETTING SWAN SMALL, BIANCO PURO MARBLE, 2007  
PHOTO CREDIT: D. A. BROWN PHOTOGRAPHY

Kaplan has a rich and diverse background in sculpting, starting first with wood, then with clay, next with welding and finally settling down with stone, alabaster and marble.



TEAR DROP ASKEW, CALACATTA CARRARA MARBLE, 2006  
PHOTO CREDIT: D. A. BROWN PHOTOGRAPHY

Visitors to the exhibit will be provided with gloves, allowing them to touch Kaplan's sensual sculptures and experience their smooth surfaces and pleasing curves.



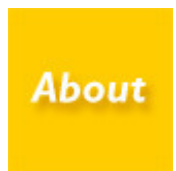
WHITE SHROUD, STATUARIO CARRARA MARBLE, 2003  
PHOTO CREDIT: D. A. BROWN PHOTOGRAPHY

More of Kaplan's work can be found at <http://www.charliekaplan.com>.

#### PYO Gallery LA

1100 S. Hope St, Suite 105, Los Angeles, CA 90015  
<http://www.pyogalleryla.com/>

Tagged [Charlie Kaplan](#), [PYO Gallery LA](#)



#### About Megan Koester

Megan Koester is a Los Angeles-based writer who's irrationally obsessed with comedy, cocktails and Californian culture (as well as alliteration). According to The Huffington Post, she's one of 18 Funny Women You Should Be Following on Twitter (assuming that sort of thing impresses you). You can follow her [@BornFeral](#).

[View all posts by Megan Koester →](#)

#### Leave a reply

Your email address will not be published. Required fields are marked \*

Name \*

Email \*

Website

Comment\*

# FABRIK

ART, DESIGN | ARCHITECTURE

Fabrik as media platform connects and profiles influential and visionary innovators, features contemporary artists, distinctive galleries, trendsetting designers, discerning architects, and showcases emerging artists.

## + CHANNELS

Architecture

Art

Artists

Design

Emergent

Fresh Faces

Photography

## + QUICK LINKS

Current Issue

Previous Issues

Gallery Guide

Advertise

ArtConcierge App

## + ARCHITECTURAL HIGHLIGHTS

